



challenger burgess
ESTATE AGENTS

Priory Road, Portbury, BS20 7TQ

£350,000

3 1 2



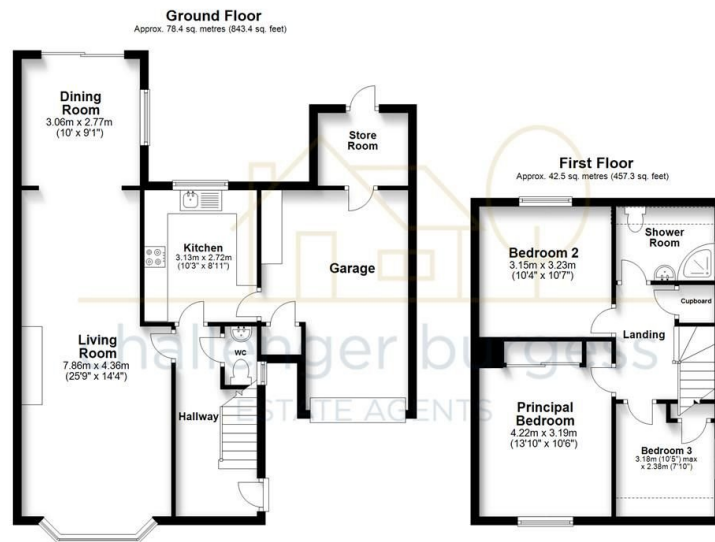
Located in the popular Village of Portbury is this much loved, three bedroom semi detached home. First time to the market, this home has been well maintained and has much to offer.

In brief the accommodation comprises:- Bright Entrance hall, doors to Cloakroom with wash hand basin and W.C. The spacious living room is flooded with light and has a built in feature stone built fire place with inset gas fire, open plan into the extended dining area which has and outlook and access to the pretty rear garden. The kitchen is well stocked with a range of matching wall and base units with work surface over, there is a built in double oven, four ring gas hob and a one and half bowl sink and drainer unit, and a window over looking the rear garden. From the kitchen you have access into the garage which has a utility area with plumbing for washing machine, power and light, door to store room. Stairs from the hallway to the landing, loft access with ladder, light and is partially boarded. Doors to the spacious principal bedroom with fitted mirror fronted wardrobes and window to front, Bedroom two is a double room with a window to the rear and bedroom three has window to the side. The shower room is fitted with a three piece white suite comprising corner shower cubicle, pedestal wash hand basin and low level W.C, there is a wall mounted heated towel rail and window to the side. The shower room previously had a panelled bath and this can be re fitted to suit.

Externally the property sits in a cul-de-sac behind a front garden with lawn and mature bushes. The block paved driveway provides off road parking and leads to the single garage with up and over door. The side access takes you into the pretty, private rear garden which has an array of mature flowers and shrubs, there is a summer house and a pagoda providing the perfect spot for outside dining.

Portbury is set on the outskirts of Portishead and a short drive of Clifton, Bristol. Close at hand you have the sought after Priory Public House, the local village hall, M5 motorway, "Bluebell Wood" which is an area of beauty to walk and relax. This property falls in the catchment of St Marys Primary School.





- Village Location
- Semi Detached House
- Three Bedrooms
- Open Plan Living
- Beautifully Presented
- Private Rear Garden
- Garage and Driveway
- Potential To Extend
- Freehold
- Council Tax Band D

